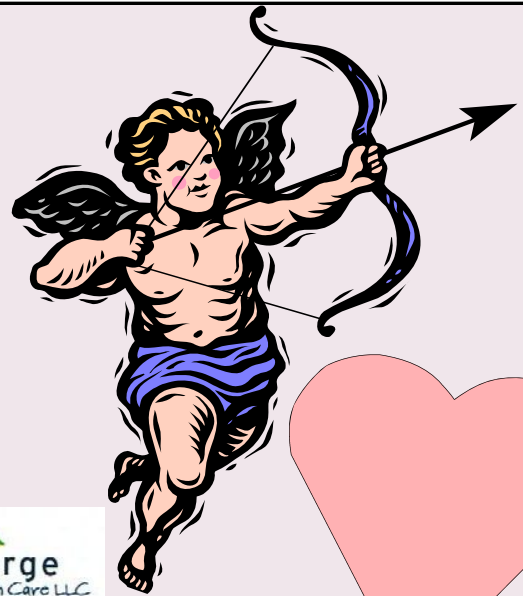


FEBRUARY 2011

THURSDAY

- | | |
|----|---|
| 3 | 11:00 TO NOON- CRAFTER'S CLUB
NOON- LUNCH \$2.50
1:00- COOKING DEMONSTRATION
PRESENTED BY PAM PATTERSON OF THE UNIVERSITY OF ILLINOIS EXTENSION |
| 10 | 11:00 TO NOON- CRAFTER'S CLUB
11:00 TO NOON- BLOOD PRESSURE CHECKS BY CONVERGE HOME HEALTH
NOON- * FREE LUNCH & DESSERT
SPONSORED BY HOSPICE & PALLIATIVE CARE OF N.E. ILLINOIS
& CONVERGE HOME HEALTH
1:00- WELLNESS AFTERNOON W/HOSPICE & PALLIATIVE CARE OF N.E. IL |
| 17 | 10:00 TO NOON- PEOPLE'S CHOICE <i>GAMES</i>
11:00 TO NOON- CRAFTER'S CLUB
NOON- * EVERYBODY'S BIRTHDAY PARTY (SPONSORED BY DORR TWSP)
NOON- LUNCH \$2.50
1:00- BINGO! |
| 24 | 11:00 TO NOON- CRAFTER'S CLUB
11:00 TO NOON- Pictionary
NOON- LUNCH \$2.50
1:00- ART AFTERNOON WITH DAWN |

WOODSTOCK SENIOR CENTER
(@ HEARTHSTONE COMMUNITIES)
840 N SEMINARY AVENUE
WOODSTOCK, IL 60098
CALL 815-344-3555
FOR MORE INFO!



* REGISTRATION REQUIRED